



PIHA

FROM
\$304,500

EX YARD, FIXED COST

Includes an NZCB 10-year build warranty & a code compliance certificate.



ENERGY
EFFICIENT



MODERN
DESIGN

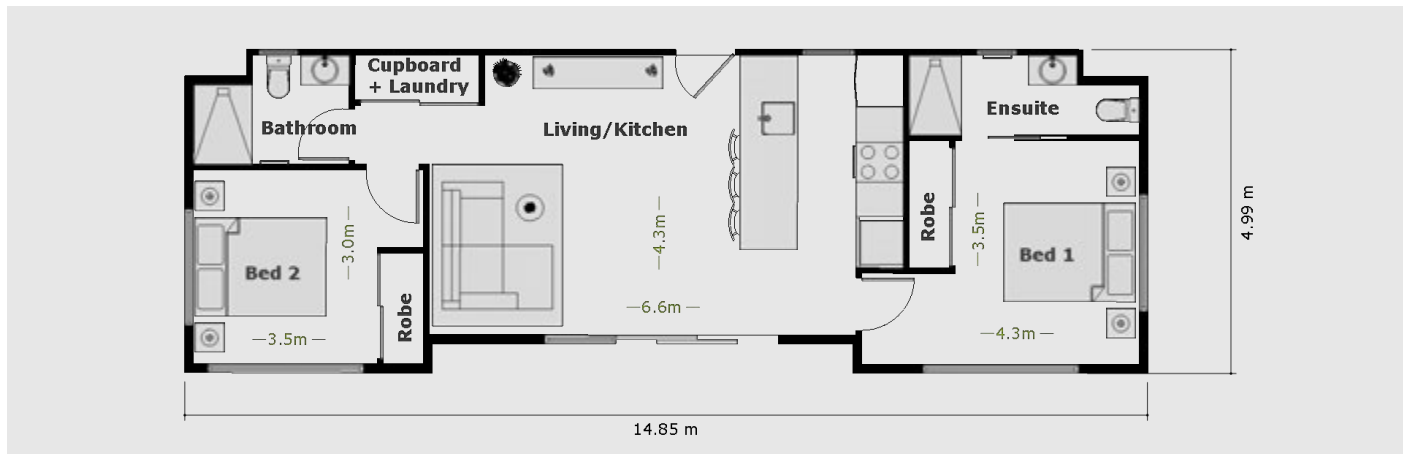


TRANSPORTABLE



TURKEY
OPTIONS

FLOOR PLAN



SMART. STYLISH. SUSTAINABLE.

Greenhaven Homes are premium-quality transportable homes, thoughtfully designed to combine modern style with everyday functionality. Built off-site and delivered fully complete, they arrive ready for on-site connection.

The Piha features two bedrooms and two bathrooms, making it a smart choice for secondary dwellings or family living.

Remove the hassle? We can provide a turnkey service, including consents, installation, and service connections. Additional fees apply.



TAKE A LOOK INSIDE



ENTRANCE



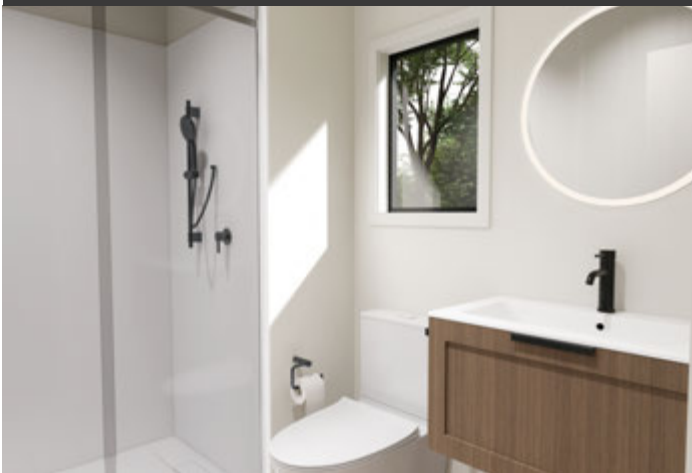
KITCHEN



LOUNGE



MASTER BEDROOM WITH ENSUITE



BATHROOM



BEDROOM TWO

